

Tex Coat (4303/4313) Application Tips for Success #100

Problem:

- We have seen a few instances recently where customers are not using our Tex Coat products properly. Two key customer mis-steps are:
 - Heavy Application
 - Insufficient flash times

The Process: Customer apply Tex Coat, Sealer, Basecoat and Clearcoat.

Issue: Over time the product may separate from itself and delaminate.

Root Cause: Customers are putting the tex-coat on way too heavy with a short flash time and then applying other coatings over the top of it. When applying the tex-coat too heavy it doesn't receive the proper flash time, meaning the coating is being applied wet on wet. Soon after, the customer is putting on a sealer, basecoat and clearcoat, which re-wets the tex-coat. The solvents have to evaporate and when they don't, because of additional coats of sealer, basecoat and clearcoat it causes the tex-coat to stay wet and ultimately causes it to delaminate.

The Fix: Shake can thoroughly before using. Make sure to test on a spray-out panel before applying for final finish. Apply 3 medium coats allowing 20-30 minute flash time in between coats. It is recommended to apply on a substrate that has a panel temp between 70°-75°F (21-24°C). It is very important to keep the can 12-18 inches from the substrate in order insure proper film thickness. You can adjust appearance by simply pressing nozzle completely down for a smoother surface or apply light pressure on the spray nozzle for less air and more of a rough appearance. This is an excellent product as it builds quickly and is easy to use to match many textures.

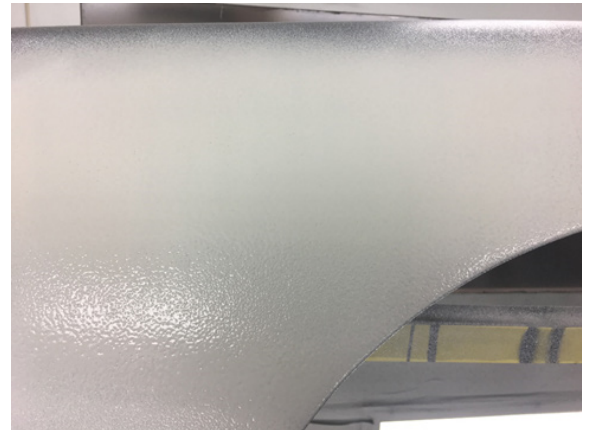
See pictures on next pages for visual examples!

Tex Coat (4303/4313) Application Tips for Success

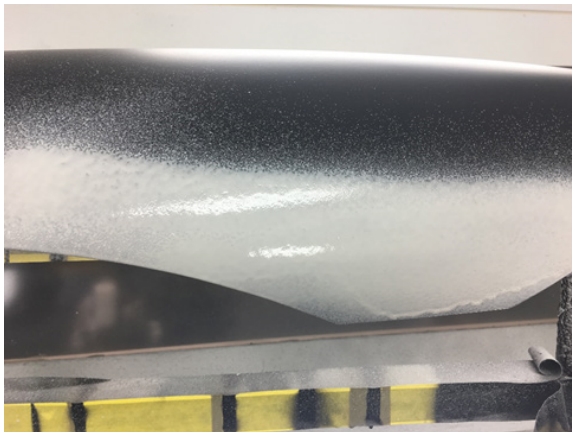
Example: Correct. Medium Coat with can
18 inches from substrate



Example: Correct. Appearance after
3rd coat



Example: Incorrect application. Too close
and too heavy



Example: Incorrect application. Too
close and too heavy

